

# Elmlea Schools' Trust Newsletter Issue 33 Friday 7th June 2024



## 2023/24 Academic year

### Term 6

Mon 3 June - Tues 23 July

**Year 3 Information Evening** Wed

26 June 6:30pm

**INSET DAY** Fri 28 June

### Sports Day Dates

**Y5 & Y6** Mon 1 July back up Tue 9

**Y3 & Y4** Tues 2 July back up Mon 8

**Infants** Thur 4 July back up Weds 10

Last Day of Term Tues 23 July

## 2024/25 Academic year

### Term 1

Mon 2 Sept–25 Oct '24

**INSET DAYS** Mon 2, Tues 3 Sept &

Fri 25 Oct '24

*First day of Term 1 Children return*

*to school Wed 4 Sept '24*

### Term 2

4 Nov – 20 Dec '24

### Term 3

6 Jan – 14 Feb '25

**INSET DAY** Mon 6 Jan '25

*First day Term 3 Tues 7 Jan '25*

Full details can be found [here](#)

Dear parents and carers,

I hope you all had a good half-term and that you were able to spend some time together as a family. Your children have returned refreshed from their break and ready for their last term this academic year, thank you, it makes a real difference.

Term 6 highlights include final school trips and for Yr6 they will be going on their residential trip to West Wales, as well as all the other engaging learning opportunities the teachers have planned for their classes.

**Elmlea Sports Days** - We also have our sports days this term and we look forward to welcoming lots of families on site for these community events. With that in mind, just a reminder to safeguard all children we have a professional photographer joining us for all our sports days so please do not take any photos of the children. Also please do not bring glass bottles on site in case of breakages and also to be aware that any medication (tablets, syringes, liquid medicine etc) that you or relatives may need during these events is carefully stored away in your bags to prevent it accidentally dropping out on the field or playground.

Our fabulous PTA will be selling hot drinks before the sports day and I can confirm that sports days will start as soon as possible after drop off and the register taken, see timings below, so please stay on site after drop off.

**Elmlea Summer Fair** – The children are already very excited about our summer fair as are we, however, in order for it to happen the PTA still need lots of volunteers to give 30 minutes on the day for stalls, please sign up [here](#).

Lorraine Wright,

### Sports Day details

**Years 5 & 6** - Mon 1 July (back up Tue 9 July)

**Years 3 & Y4** - Tues 2 July (back up Mon 8 July)

Junior timings: start asap after drop off, finish 12pm

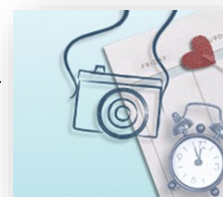
**Infant school** - Thurs 4 July (back up Weds 10 July)

Infant timings: 9:15am start, finish by 11am



### School Class Photos

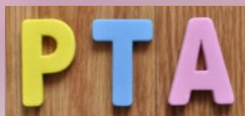
Your child's school photos will be archived in two days. Don't miss out on this year's photos and order today! After archiving, your photos will still be available but the product price will increase. If you have lost your access code, please contact Tulip Photography directly on [cpsemail@tulip-photo.com](mailto:cpsemail@tulip-photo.com) and they can provide you with the code.



### PTA Dates for your diary

Sat 6 July - PTA Summer Fair 11am-3pm

Sat 30 Nov - PTA Xmas fair



### Elmlea supports the Lunchbowl Network

This week Anna-Kate from the Lunchbowl Network came to talk to both schools during assembly, about this amazing charity and the work that they do. The Lunchbowl Network was set up in 2006 in response to the plight of the orphaned and vulnerable children living in the Kibera Slum in Nairobi, Kenya. As a school, we have supported this charity for many years, first through the Infants and more recently as a Trust. Last year we raised over £1,000, which has made a massive difference to the children living there.

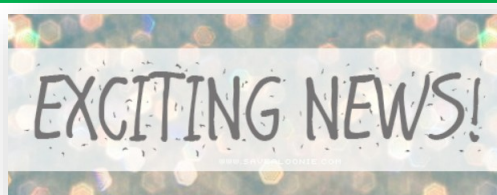
This year we will again be running a shop selling a range of handmade items from the Slum, raise funds to support the charity. The shop will run from Monday 17th June to Thursday 20th June at the end of the school day 3:15-3:30pm. The Infant stall will be by the canopy in the KS1 playground and the Junior one will be on the table tennis table in the Junior playground. Please note, we do NOT have a card machine and items cost are 50p, £1, £2, or £3 so please bring your coins!

You can learn more about the charity [here](#).



## Inclusion Information and Support

We have exciting news to share with our school community. We have been chosen to take part in a project funded by NHS England in collaboration with the Department of Education, Bristol City Council and Bristol Parent Carers. This initiative will bring an investment to the school to help us support all pupils and help create an even more inclusive learning environment.



By sharing your views you will help us understand how we could better meet the needs of your child. Your feedback will then help shape a unique package of support for the school. The deadline to reply is 1 week from today as we will be starting this project in September and need to start planning as soon as possible.

Please click on the link to access the [survey](#). If you have any questions or would like more information, please contact Bristol Parent Carers at [info@bristolparentcarers.org.uk](mailto:info@bristolparentcarers.org.uk)

**Please respond to the survey by 3pm Monday 10<sup>th</sup> June**

## External Clubs Information

**Shine Holiday Clubs** are running at school again this summer. We have loved seeing so many children come along and look forward to welcoming more of you! For a limited time, get 20% off using the code Early Booker in your basket (valid until Sunday 30th June.) Click [here](#) for more information and to book your spot.

**Tennis Summer Camps** - Click [here](#) for holiday camps run by Henleaze Lawn Tennis Club's highly qualified and LTA accredited coaching team.

**Mad Science Camp** - Exciting Summer Opportunity, the camp is dedicated to sparking the imagination and curiosity of children through hands-on, interactive science activities. More information [here](#).

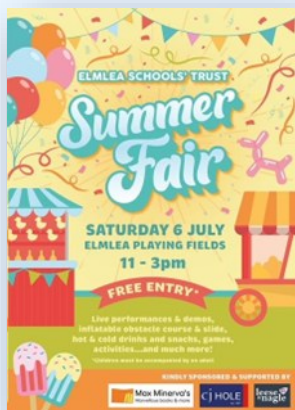
### Aspens School Lunches 20th June BBQ theme day

Grab a fork and 'fire up the barbie'. Please see attached the [poster](#) and [menu](#) for the theme day we have in place on Thursday 20th June celebrating BBQ season.





## PTA News



Join us **Saturday 6th July, 11 - 3pm, at Elmlea for our Summer Fair.**

Set to be a fun-filled day with a live Samba Band, dance & musical performances, Martial Arts demos, inflatables, free activities, games with amazing prizes donated by fantastic local businesses and a fire engine.

Plus a selection of stalls selling art, jewellery, plants, reflexology and woodwork, alongside stalls selling food and drinks.

Food and externally run stalls will take cash, but PTA stalls will be cash-free. Packs of £1 tokens will be available to purchase on arrival and throughout the day.

Children must be accompanied by an adult

To help the fair run smoothly, we need the help of everyone. Please visit this [sign up genius link](#) and volunteer for a slot.



And a huge thank you to Max Minerva's, our main sponsor, who have offered 10% off your first purchase with the code Elmlea2024.

Visit [maxminervas.co.uk](http://maxminervas.co.uk) (one use per customer, no maximum spend).



We have a great line-up of events next year with a large team of organisers and leads for nearly all events - thank you event organisers!

To help further we are looking for volunteers to:

- \* Organise teas/coffees for Bedtime Stories for Children in Need
- \* Coordinate the summer ice cream sales

\* We are also still looking for a **Chair, Treasurer and Secretary**. These roles can be shared or sized to suit you and some companies count this towards your volunteering time! You will be supported by a large team of event organisers. Without these key roles filled we legally can't function, and none of the planned events can go ahead.

If you're interested in any of the above or just want a chat to find out more, please contact us.

If anyone has a **small fridge** going spare that we can use in the lodge, please contact us.

And lastly, the **2 new outdoor classrooms** are nearly built and looking fabulous. This has been possible with the help of funds you've raised, so thank you everyone.

PTA, [elmlea.school.pta@gmail.com](mailto:elmlea.school.pta@gmail.com)





# Year Group News

## Reception

Wow Reception - What a brilliant first week of Term 6!

This week we started whole class teaching where we all sit down at the table and complete the same activity together. We are all so proud of the independence the children have shown this week as we start to get ready for Year 1! In phonics this week we have been looking at words that contain a long vowel sound and also constant clusters. The children have really enjoyed reading and writing these words independently.

As a team, we have spent a lot of time reading 1:1 with your child this week and it has been amazing to see the fantastic progress they have made. Please continue to read with your child at home as much as possible and let them show you what they can do!



The Reception Team

## Year 1

Welcome back Year 1! We have had a lovely first week back. We have kickstarted our new topic:

The Toymaker which the children have thoroughly enjoyed. We have taken a step back in time to understand what it was like to live in the Victorian times, we especially enjoyed thinking about what schools were like. In maths, we have been working on coin recognition and handling money, any practise at home of pennies would be great! Next week, we will complete the Phonics Screening assessment for all children.



**Reminder: Friday 14<sup>th</sup> June - Victorian dress up day**

Year 1 Team

## Year 2

Year 2's new topic is Castles! On Monday we watched some exciting videos about them, designed our own coat of arms and did some detailed castle line drawings. We have continued learning about castles in English and have written factual sentences to prepare for writing our own non-chronological report. During maths, we have been recapping strategies we learnt earlier in the year for adding and subtracting 2-digit numbers. We enjoyed a trip to Horfield school for a big singing lesson with other children and the children represented Elmlea brilliantly. Thank you to our wonderful parent helpers!



Thank you, Year 2 team

### Year 3 Information Evening

Current Year 2 parents, please note the date - 6:30pm on Wednesday 26<sup>th</sup> June in the Junior school hall for your Year 3 Information Evening.



### Year 3

Children in Year 3 have returned to school happy and enthused after half term. Our English poetry unit has focused on Tanka poems and these Japanese poems are similar to Haikus but have two extra lines, each containing 7 syllables. Pupils created and published their poems based on sea turtles and then performed them focusing on intonation, pace and volume. The children also drew their own sea turtle pictures.



structure of a tanka	
Line 1:	5 syllables
Line 2:	7 syllables
Line 3:	5 syllables
Line 4:	7 syllables
Line 5:	7 syllables

Well done, Year 3!

Year 3 Teaching Team

### Year 4

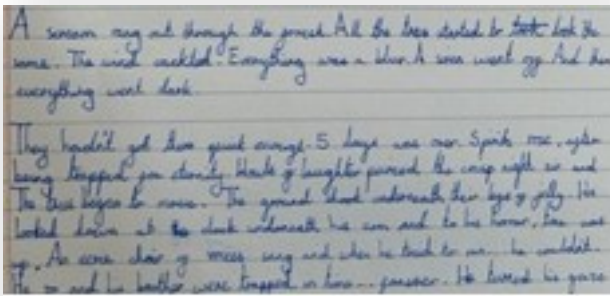
Year 4 have had a super exciting first week back of Term 6. We cannot believe where the time has gone this year. On Wednesday, the whole year group had the opportunity to visit the Hindu Temple in Redfield. It was such a special feeling to be in the temple all together and learn about the traditions of Hinduism from the Priest. The children were respectful, inquisitive and made the adults proud. In English, we have started a Viking adventure saga, Erik the Viking! We have been impressed with the children's enthusiasm and positive attitudes on their return to school. Well done Year 4!

Y4 Teaching Team



### Year 5

Year 5 have started the new term really positively and have impressed us with their commitment towards preparing well for their role in the Y5 production.



In maths, we have consolidated our knowledge of negative numbers, roman numerals and decimals while in English we have begun a new writing unit on suspenseful descriptive narratives.



Year 5 Teaching Team

### Year 6

Year 6 have had a fantastic week and have been busy writing accurately and cohesively for a range of different purposes.

We really enjoyed our visit from the Flat Stan Workop on Tuesday, where we learnt many different strategies to deliver first aid. In maths, we explored how much maths we could get from a packet of Chewits and in science we designed and moulded our very own microbes out of plasticine.



A productive and creative week- well done year 6!

Miss Leach, Miss Sheffield and Mr Dickenson