

# Elmlea Schools' Trust Newsletter Issue 10 Friday 18th November 2022



Elmlea  
Schools' Trust

## DIARY DATES

### 2022/23 Academic year

#### Term 2:

Mon 31 Oct - Fri 16 Dec '22

**KS1 Curriculum evening**

Wed 23 Nov 6pm

**PTA Christmas Market**

Thurs 24 Nov 6-8pm

**Nasal Flu Vaccinations**

In school Tues 29 Nov

**Christmas Performances**

Reception - Weds 7 Dec 2pm &

Thurs 8 Dec 9:30am

Year 1 - Tues 6 Dec 2pm &

Weds 7 Dec 9:30am

Year 2 - Tues 6 Dec 9:30am &

Thurs 8 Dec 2pm

**Christmas jumper day (Trust)**

Fri 9 Dec

Year 3 - Mon 12 Dec 1:45pm &

Tues 13 Dec 6pm

**\*\* Sign up emails for shows**

**will be sent out shortly\*\*\***

#### Term 3:

Tues 3 Jan - Fri 10 Feb '23

**INSET DAY Tues 3 Jan '23**

#### Term 4:

Mon 20 Feb - Fri 31 March '23

**INSET DAY Mon 20 March '23**

#### Term 5:

Mon 17 April - Fri 26 May '23

**Early May Bank Holiday**

Mon 1 May '23

**King's Coronation Bank Holiday**

Mon 8 May '23

#### Term 6:

Mon 5 June - Fri 21 July '23

**INSET DAY Fri 23 June '23**

Dear parents and carers,

This week has been our anti-bullying week with our theme of "Reach Out". Every class has explored (in an age appropriate way), the different types of bullying and what to do if it happens to them or if they see it happening. The "Reach Out" theme has been reinforced to encourage children to speak to their friends, any grown up in school or their families about bullying they see or is happening to them. Our child-friendly anti-bullying [policy](#) has been reviewed this week with the children and some excellent information for parents from the anti-bullying alliance can be found [here](#) as well as on our school website.

#### Book at Bedtime and Children in Need

On Wednesday night, the Infant school held our book at bedtime for all the children to come back into school in their pyjamas and onesies to listen to a story. The children were so excited to come back to school in the dark and a big thank you to our teachers for hosting it. We hope we have raised some money for Children in Need too at the same time. If you'd like, you can contribute [here](#).

Thank you to everyone who has helped us raise money for children in need through our non-uniform day. Lots of different outfits have appeared today which have given the day a really colourful theme. Who knew there were so many different Pudsey bear outfit combinations too. If you haven't already, please make your donation [here](#); last year we raised a staggering £1,815 across the Trust and we are getting close to beating that! Thank you everyone.

#### Maths information evening

Thanks to all those parents who attended last night's maths information evening at the Junior School. Many parents attended and we hope that you found it really informative. For those who were unable to attend, please find the calculation policy [here](#). We really want to help you support your children with their learning and if there are other workshops you would like us to run please let us know via the school office [info@elmleaschoolstrust.com](mailto:info@elmleaschoolstrust.com).

#### Elmlea Science, Technology, Engineering and Maths (STEM) week

Our annual STEM week is running in January and our theme this year is "Speed". We are particularly keen to speak to any parents or carers who work for Airbus or Rolls Royce or any other organisations where "Speed" would fit with our STEM subjects, if you do please can you let the office know.



Lorraine Wright, Executive Headteacher

#### Road Safety and lack courteous parking



We continue to have complaints on an almost daily basis from inconvenienced neighbours and worried parents about cars parked on the school zigzags, double yellow lines and across drive-ways. Can we remind every parent and carer to park safely and courteously and be respectful of our neighbours at all times.

### Music News

We have had lots of fun this week in year 6 finishing the djembe drumming pieces and have now videoed a performance to mark the end of the unit. It looks and sounds really good!

Coming up soon: on Friday 2<sup>nd</sup> December the junior choir are performing with several other choirs at St George's concert hall; on Sunday 4<sup>th</sup> December the chamber and boys choirs are singing in Treefest at St Mary Redcliffe Church; and on Wednesday 14<sup>th</sup> December the orchestra and choirs will be singing in our own special Christmas assembly at school. In addition, next week we will be welcoming an inspirational speaker to our singing assembly: Carl Morgan. Carl is a musician and music therapist with a sight impairment who is coming in to talk about his work and living with a disability.



Miss Sadler, Co-ordinator of Music

## Aspens



### Aspens Services 2022 Client Satisfaction Survey

The Aspens Services Client Satisfaction Survey launched this week, it is your opportunity to express your views and help review their services to you. Your feedback will help Aspens Services to review their service delivery, as well as highlighting areas and personnel that perform well. Every parent across the Trust will have received an email link.

- **It does not take long to complete** - it should only take about 10 minutes.
- **It is easily accessible** - the survey link will work on a PC, laptop, tablet, or on your smartphone.
- **It is completely confidential** - the survey is hosted by Survey Solutions, who are an independent research consultancy, managing all the data capture and analysis, ensuring your anonymity and confidentiality throughout. No-one from Aspens Services will see your individual responses, unless you select an option at the end of the survey and choose to identify yourself. This will help Aspens Services in arranging follow-up discussions related to any query you have. **Closing date for submitting your response online is 5.30pm on Friday 2nd December.**

### Elmlea Schools Trust Teacher-led After School Sports & Music Clubs

The following teacher-led after school clubs will be running in Term 2 (please note they are now all full):

**Mondays** Yr 5 Netball: Miss Sheffield, Playground

**Tuesdays** Yr 3-6 Choir: Miss Sadler, Main Hall

**Thursdays** Yr 1 & 2 Choir: Miss Sadler, Infant School

**Fridays** Yrs 5 & 6 Football: Mr Salisbury & Mr Weller, Field



Please note, the above clubs are the **only ones running this term**. With the exception of Junior and Infant Choir, which runs all year, places in all other clubs are allocated on a termly basis (ie/ 5 to 7 weeks maximum).

Please always ensure you let the School Office know if your child is unable to attend as if they do not show up, we are required to initiate our Missing Child Procedure, which could ultimately result in a call to the Police if we are unable to contact you.

**Collection after clubs:** If you are collecting children from a Junior school sports club or from choir please can you line up behind the railings in front of the playground door. This will help the club leaders to dismiss the children safely. Thank you for your help with this matter.

### KS1 curriculum evening Weds 23rd Nov



We would like to invite you to the KS1 (Yr 1 & 2) curriculum evening from 6pm on Weds 23<sup>rd</sup> Nov in the Infant hall. We will be discussing the curriculum in Y1 and Y2 and explaining how Maths and English are taught across both year groups. We will be also including ways to support your child at home. The Power Points will be available on the website and a link will be included in a future Newsletter.

### Can I send my child to school with Covid?

Across the UK, there is broadly similar guidance for those aged 18 and under: if they have mild symptoms like a sore throat or slight cough, but are otherwise well, they can go to school or college. If they have a temperature or feel unwell, they should stay at home and avoid contact with others where possible until they feel better. Testing isn't recommended - but if they do test positive, they should stay at home for three days, even if they feel well.



## PTA Notes

### Christmas Market



Thank you to everyone who has signed up to help! What a lovely bunch you are. However, we still need more of you. Please grab a friend, [volunteer for a slot](#) and then join us for market merriment.

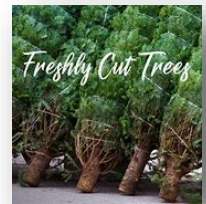
We are thrilled to have Henleaze's brilliant independent bookshop; sustainable household products and homeware; bespoke children's clothing; dried flowers and wreaths; macrame; woodwork; jewellery; cards; pre-loved toys and books...something for everyone!

To help us be as green as possible, do bring your own cup if you can.

The big **pre-loved toy and book drop** continues until Wednesday 23rd. Thank you for the great donations so far. Please donate toys and books that are in a decent condition. Please make sure they are bagged or boxed so as not to invite too much attention from the kids! You can drop donations before and after school until Wednesday 23rd November, on the bench by the Junior entrance or under the canopy by the Infants.

### Christmas Trees

A little reminder you can support the school by buying your Frenchay Forestry Christmas tree [here](#) too! Collection is 5pm-6.30pm, Wednesday 7th December from school. Two-thirds have sold already, with one size now sold out. Do have a look if you can manage to get your head into Christmas mode!



### Easyfundraising

Support the School while shopping online! It won't cost you a penny! You can find our cause [here](#).

### Recruiting

We're looking for someone to join us in a **Communications role**. This would involve drafting and sending messages to class links, keeping our website up to date, leading on posters, and maintaining our presence on Facebook. We are all busy parents, doing what we can, and would welcome anyone who fancies joining us in this role. We promise it won't be too onerous! Do get in touch [elmlea.school.pta@gmail.com](mailto:elmlea.school.pta@gmail.com).



### Nasal Flu Vaccinations on 29th Nov - FINAL CONSENT REMINDER



Here is the [link](#) to complete the consent online which is required if you want your child to receive the vaccination in school.

Please note that the e-consent process for the vaccinations will close at midnight two working days prior to the 29 November. Parents will not be able to submit a consent form electronically after the closing date.

## COMMUNITY NEWS

### Old Bristolians Rugby Club - Mini & Junior Rugby



Old Bristolians are an entirely voluntary organisation with over 300 children across the age range of 4-18 playing rugby every Sunday.

Under 7 (School year 2) is an important age group for us and we are looking to recruit some new boys and girls to our squad and community, we already have some Elmlea students with us. At this age, and the next age up, rugby is non-contact (Tag). Progressive contact starts from school year 4.



Rugby is a great way for boys and girls to develop self-esteem, fitness, confidence and make lifelong friends. OBs has a focus on FUN – the foundation of our FASTER club ethos! It's a welcoming community with excellent coaching. You can find more information [here](#).



Elmlea  
Schools' Trust

# Year Group News

## Reception

Keep an eye out on tapestry or in your child's book bag for their part in the nativity! Lines will come home next week!

Thank you to parents and carers for supporting our morning playground setup routine!



Many thanks, The Reception Team

## Year 1

We are so proud of the children's work this week! We shared a beautiful poem about a red fox and then spent time exploring ways to describe the fox and where it could be found. Then the children used their ideas to create the most amazing poems of their own. Perhaps if you have any pets at home, or you see an animal in the garden, your child could think of an imaginative way to describe what it looks like and what it's doing. In maths, we have been practising addition and combining parts to make a whole. Perhaps at home you could organise some toys into groups then combine them and write a number to match.



Year 1 Team

## Year 2

What a week- our Christmas play is coming along nicely and the children came up with some fantastic actions for the songs! We have been working hard at adding and subtracting across 10 using number bonds to 10 in maths, Year 2 have been using number lines and partitioning to help them work out some tricky questions. Our Rainforest topic has continued with animal habitats, animal descriptions and reading comprehension. Thank you to everyone who came to our bedtime story at school, it was lovely to see all of your teddies and to read to you. Have a lovely weekend!



Year 2 Team

### Year 3

This week has been another great week in Year Three. We started our week by wearing odd socks to help raise awareness about Anti-Bullying week. We have thought carefully about how we can reach out to a trusted person to share our worries. We took part in the live lesson, have written diary entries centred around a new text: The Invisible Boy and have even created messages to each other to say something we value about them. In DT, we are creating our very own Tudor Houses! We have been practising the use of different linkages and levers and have planned to use these in our very own Tudor Houses. Finally, we have been busy in maths learning about fractions and how we can represent them using diagrams/visuals as well as challenging ourselves to add fractions when the denominator is the same number.



#ANTIBULLYINGWEEK

Year 3 Team

### Year 4

Year 4 had a great start to Anti-Bullying Week by wearing their odd socks to school on Monday. We discussed the significance of the odd socks and agreed that we celebrate everyone's differences at Elmlea. We also discussed this year's theme of reaching out and what that meant to each of us. In maths, we have been learning more about perimeter and the best strategies to use to calculate them accurately. Children have been completing their independent biographies about Henry VIII in English and they have taken care to draft and edit before finally publishing their pieces. In science, we have been planning an investigation to see the effects of different types of drinks on our teeth. We also enjoyed celebrating Children in Need on Friday. Additionally, some children from Year 4 have been working hard to create art for the Baptist Church's advent display which will be up soon.



#### Reminders for this week:-

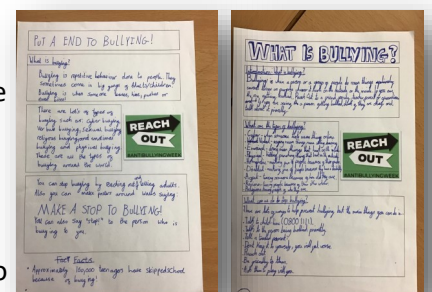
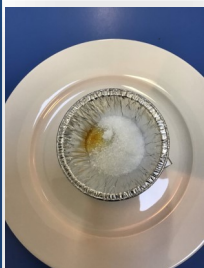
Please remember to keep practising your song words for Young Voices.

Try to make Times Tables Rock Stars part of your daily routine as little and often makes a big difference.

Year 4 Team

### Year 5

Year 5 have really enjoyed Anti-bullying week and have shown a great understanding during circle time and the BBC live lesson. They have written a non-chronological report to showcase their knowledge. We have also been impressed with their creativity during art lessons as well as their focus on using a variety of techniques to draw 3D objects. In Science, we tested reversible and irreversible changes using heat. It was brilliant to hear their predictions and children using scientific vocabulary. What a great week Year 5!



Year 5 Team

### Year 6

We have been very reflective during anti-bullying week exploring what really is bullying and what might just be a 'mean moment'. We discussed how 'banter' or 'jokes' can also be forms of bullying behaviour. We have explored how a lack of experience and understanding of difference can lead to prejudice and discrimination. We are determined to celebrate our uniqueness and call others out if they are using difference in a negative way. We are also enjoyed writing some poems with our Y3 buddies in Golden Time.

In maths, we have calculated with fractions (+ and -) and in science we investigated reflected light. In art, we have studied how to create 3D form in a 2D drawing (of potatoes!) and in history we learnt about Anne Frank and how her diary is such a valuable historical resource.



Year 6 Team